

# SPECIGRAM

Official Newsletter of the Pittsburgh Chapter, Construction Specifications Institute (CSI)

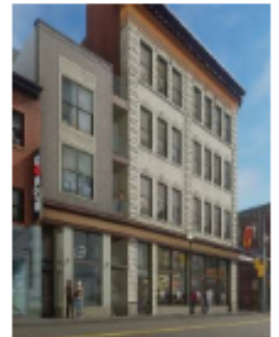
## OLD BUILDINGS – NEW LIFE Opportunities and Challenges of Adaptive Reuse

**NOVEMBER 14, 2023**

**5:30 – 8:00 PM**

**Construction Junction, 214 N Lexington St, Pittsburgh, PA 15208**

Adaptive reuse is on an unprecedented rise. Estimates show that within the next ten years, ninety percent of real estate development will involve adaptive reuse existing buildings in lieu of new construction. There are many contributing factors to this paradigm shift, but one key influence has been an increased awareness of climate change and its impact on our planet and its inhabitants. Hear Scott Bofinger and Jesse Gidley of LGA Partners discuss preliminary design considerations that evaluate the feasibility of adaptive reuse and the technical details to make it a reality. They will illustrate this through case studies of projects here in the Pittsburgh area. Come learn about the future of our industry.



**Networking: 5:30 pm**

**Dinner: 6:15 pm**

**Presentation: 6:45 pm**

Catering by Sprezzatura of Millvale. Dinner includes: Antipasti platter appetizer; organic local greens salad with homemade vinaigrette; four-cheese penne; beef meatballs; dessert - Italian cake; one drink included (beer or wine).

REGISTRATION: [https://app.memberplanet.com/#/event/csi-pittsburghchapter/novemberchaptermeeting\\_3](https://app.memberplanet.com/#/event/csi-pittsburghchapter/novemberchaptermeeting_3)

\$40 per person

*We are using a new registration system that will hopefully be easier called MemberPlanet. You can pay at the door (cash or check) or use a credit card on the MemberPlanet site which will add an additional processing charge. Everyone should register on the MemberPlanet site whether you are paying ahead of time or at the door (both options are available).*

*This program meets the AIA/CES requirements for continuing education and qualifies for 1.0 HSW Learning Units.*

Questions: E-mail Brian Trimble at [btrimble@imiweb.org](mailto:btrimble@imiweb.org) or call 703-300-0109.



## MEMBER NEWS

### November Anniversaries

5	Bobby Chestnut	McGrory Glass
5	Ryan Dietz	REPS of Ohio
1	Louis Stamerra	BWA South
1	Neil Weigel	Emerging Professional

**Current Membership: 70**



## 2024 MID-ATLANTIC REGION CONFERENCE

### Historic Richmond, Virginia

### April 4-7, 2024

## CSI Members

### BY OCCUPATION:

- Architecture, Design
- Building Product Manufacturers
- Construction, Contracting
- Specifications
- Engineering
- Other



### BY ORGANIZATION TYPE:

- Firms
- Manufacturing
- Contracting, Development and Management
- Academic and Association
- Government
- Other



## HIGHLIGHTS FROM THE BOARD

### October 10, 2023 Board Meeting *(Virtual)*

#### PRESIDENT

Motion to approve Carly Helbling for Board of Directors, to fill Brad Bartley's position.  
(Motion to be sent to board via email for vote.)

#### TREASURER

Outstanding funds of \$2,000 from golf outing, less \$300 owed for gift cards.  
\$825 in Billhighway account – will move to checking account.

#### GOLF OUTING

We ended up where we anticipated.

#### HOLIDAY GALA

Still need to find a chair – Thornton has been covering for now.

#### PROGRAMS

Trimble sends out (196) emails for each upcoming program, (73) which are members and (123) that are past members.

Are all the members receiving the emails? Susan will check into possibly using Constant Contact for a month to see who/who is not getting them.

Since this evening's program was cancelled, Trimble will see if LGA is still willing to do the same presentation at next month's meeting, November 14.

Specigram: Kudos to Bob Bailey for the excellent job he does with each Specigram! And the new format is awesome!

#### PUBLICITY

Possibility of revamping our website.

## BOARD HIGHLIGHTS (Cont'd)

### OLD BUSINESS

#### OPEN POSITIONS/CO-CHAIRS

We have several positions that need to be filled or co-chaired. Let's try to get Scott Keener in the mix as well as John Aiello:

- Board of Directors – needs filled to replace Brad Bartley
- Gala – needs chair
- Website – possibly a co-chair to assist Schuster during her “baby” year.

### BILLHIGHWAY

Thornton will order the machine for credit card payments. Cost is \$169, one-time fee, and \$40 annually. This will replace the PayPal payment system currently in use.

### NEW BUSINESS

#### MIDATLANTIC LEAD CONFERENCE

Saturday, November 11, 2023

Charleston, WV

Henshaw will attend.

Barra will possibly attend as well.



# CSI PITTSBURGH ANNUAL HOLIDAY GALA



YOU ARE CORDIALLY INVITED TO ATTEND  
OUR HOLIDAY GALA FEATURING:

Hors d'oeuvres & Dessert Tables  
Product displays  
Live entertainment (tentative)

**Happy holidays**

TUESDAY, DECEMBER 12<sup>th</sup>  
6:00PM - 9:00PM

Design professionals attend for free!

**RSVP online at [csipittsburgh.org](http://csipittsburgh.org)**

Questions: Marty Thornton (724) 321-0551  
[MThornton@wtwarch.com](mailto:MThornton@wtwarch.com)

WHERE: THE CHADWICK  
10545 Perry Hwy  
WEXFORD, PA

# CHAPTER LEADERSHIP

## Officers

### **President**

Mr. Matthew Lander, CSI  
AVT, Inc.  
412-257-5077  
[mlander@avtinc.net](mailto:mlander@avtinc.net)

### **1<sup>st</sup> Vice President**

Mr. Brian E. Trimble, PE, LEED AP, CSI  
IMI  
703-300-0109  
[btrimble@imiweb.org](mailto:btrimble@imiweb.org)

### **2<sup>nd</sup> Vice President**

Mr. Dan Barra, CSI  
ASSA ABLOY Door Security Solutions  
724-249-9866  
[dbarra@dsstristate.net](mailto:dbarra@dsstristate.net)

### **Secretary**

Ms. Susan Henshaw, CSI  
The Bekon Group  
724-822-1108  
[susan@bekongroup.com](mailto:susan@bekongroup.com)

### **Treasurer**

Mr. Martin Thornton II, CCS, CSI -Chair  
WTW Architects  
Phone: 412-315-3471  
[mthornton@wtwarch.com](mailto:mthornton@wtwarch.com)

## Directors

Mr. Michael C. Bosco, RA, CSI, CCS, NCARB  
412-855-5876  
[michaelbosco74@comcast.net](mailto:michaelbosco74@comcast.net)

Mr. James L. Geist, CDT, CSI  
Sherwin-Williams  
724-933-1900  
[jim.l.geist@sherwin.com](mailto:jim.l.geist@sherwin.com)

Mr. Brad A. Bartley CSI, CDT  
Consolidated Glass Corporation  
724-658-4541  
[bbartley@cgcglass.com](mailto:bbartley@cgcglass.com)

Ms. Kate Schuster, CSI  
V.O. George Group, Inc.  
724-935-1500  
[kate@vogeorge.com](mailto:kate@vogeorge.com)

Sam Roberts, CSI, CDT  
The Garland Company, Inc.  
412-417-0056  
[sroberts@garlandind.com](mailto:sroberts@garlandind.com)

## Directors (cont.)

Ms. Michaelleen Vargo, CSI, LEED AP  
LEED AP BD+C  
LGA Partners  
Phone: 412-224-6232  
[MVargo@lga-partners.com](mailto:MVargo@lga-partners.com)  
Mr. Jason Henze, CSI  
Overhead Door Co. of Pittsburgh  
412-337-1875  
[jhenze@ohdpgh.com](mailto:jhenze@ohdpgh.com)

## Advisors - also Nominating & Long Range Planning Committees

Mr. Richard Strayer, CSI  
Maffei Strayer Furnishings  
Phone: 412-741-1850  
[rstrayer@mstrayerfurn.com](mailto:rstrayer@mstrayerfurn.com)  
Mr. Bob Bailey, AIA, CCS, CDT, CSI,  
LEED AP, SCIP Affiliate  
IKM, Inc.  
412-281-1337  
[bbailey@ikminc.com](mailto:bbailey@ikminc.com)  
Ms. Kelly Brown, AIA, CSI, CCS, LEED AP  
RMCreative  
412-471-4445  
[kbrown@rmcreative.com](mailto:kbrown@rmcreative.com)

## Committees

### Publicity

Mr. Brian Trimble, PE, LEED AP, CSI, IMI  
703-300-0109  
[btrimble@imiweb.org](mailto:btrimble@imiweb.org)

### Awards

Mr. Richard Strayer, CSI  
Maffei Strayer Furnishings  
Phone: 412-741-1850  
[rstrayer@mstrayerfurn.com](mailto:rstrayer@mstrayerfurn.com)

### Membership

Mr. Damian Carnegie, CSI  
AVT Inc. - Chair  
412-257-5077  
[dcarnegie@avtinc.net](mailto:dcarnegie@avtinc.net)  
Ms. Susan Henshaw, CSI  
The Bekon Group  
724-822-1108  
[susan@bekongroup.com](mailto:susan@bekongroup.com)

### Technical/Education

Mr. Bill Cauley, CSI  
Armstrong World Industries  
878-600-1893  
[WTCauley@armstrongceilings.com](mailto:WTCauley@armstrongceilings.com)

## Committees (cont.)

### Electronic Communications/Editor

Ms. Kate Schuster, CSI  
V.O. George Group, Inc.  
724-935-1500  
[kate@vogeorge.com](mailto:kate@vogeorge.com)

### Certification

Mr. Bill Vernon, AIA, CSI, CCS, LEED AP  
Macgregor Associates Architects  
678-504-1493  
[BillVernon0411@gmail.com](mailto:BillVernon0411@gmail.com)

### Golf Outing

Mr. Dan Barra, CSI  
ASSA ABLOY Door Security Solutions  
724-249-9866  
[dbarra@dsstristate.net](mailto:dbarra@dsstristate.net)

### Hospitality

Mr. Bill Cauley, CSI  
Armstrong World Industries  
878-600-1893  
[WTCauley@armstrongceilings.com](mailto:WTCauley@armstrongceilings.com)

### Programs

Mr. Brian Trimble, PE, LEED AP, CSI  
IMI - Chair  
703-300-0109  
[btrimble@imiweb.org](mailto:btrimble@imiweb.org)

### GBA Liaison

Mr. Brian Trimble, PE, LEED AP, CSI  
IMI - Chair  
703-300-0109  
[btrimble@imiweb.org](mailto:btrimble@imiweb.org)

### Product Show Chairman

Mr. James Geist  
Sherwin-Williams  
724-933-1900  
[jim.l.geist@sherwin.com](mailto:jim.l.geist@sherwin.com)

### Newsletter Editor

Mr. Bob Bailey, AIA, CCS, CDT, CSI, LEED AP,  
SCIP Affiliate  
IKM, Inc.  
412-281-1337  
[bbailey@ikminc.com](mailto:bbailey@ikminc.com)